



Compressor
Voltage Code : KZ

TFH4540F

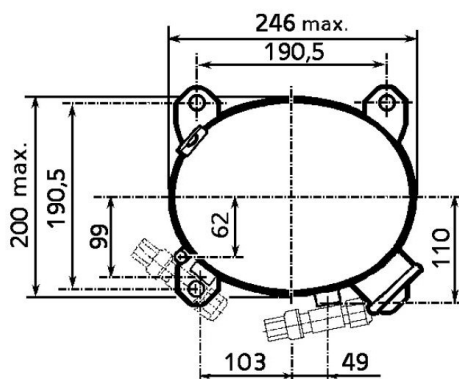
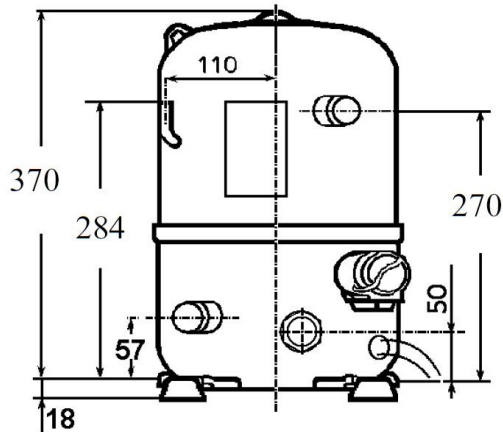
High Temp. Commercial (HP)

220V 3~ 50Hz / 220V 3~ 60 Hz

R22

AHC4540EKZ

| Conditions | Frequency | Nominal Cooling Capacity | | Sound Power ISO3745 / ISO 3743-1 |
|------------------|---------------|--------------------------|---------------|-------------------------------------|
| | | Watts | BTU/h | |
| ARI 520-90 / R22 | 50 Hz / 60 Hz | 5515 / 6591 | 18807 / 22475 | 75 dBA |



| | |
|--|--------------------------------|
| Displacement (cc) | 74,25 |
| Net Weight (Kg) | 33.0 |
| Oil Quantity (cc) | 1330.0 |
| Oil Type | Mineral |
| Expansion Device | Capillary_Tube/Expansion_Valve |
| Cooling | Fan |
| Main Winding (Ohm) | 1.17 |
| Current | |
| RLA (A) | 12.1 13 |
| MCC (A) | 18 18 |
| LRA (A) | 68 80 |
| Electrical Equipment | TRI |
| Overload | Interne |
| Refrigerating connection for OD | |
| Suction Tube | 22.2 (7/8") |
| Discharge Tube | 12.7 (1/2") |
| Process Tube | 6.35 (1/4") |

* ARI 520-90 : T°Cond. 48.9°C / T°Evap. -6.7°C / T°Return gas temp.. 4.4°C
T°Subcooling. 0.0K

Certificates :



Note : Tecumseh reserves the right to change information contained in this document without notification.



Tecumseh

| | |
|-----------------|--|
| TFH4540F | Tension KZ : 220V 3~ 50Hz / 220V 3~ 60 Hz |
|-----------------|--|

| | | |
|---|------------------------|--------|
| Les performances sont données dans les conditions ARI 520-90 : | Gaz aspirés : | 4.4 °C |
| Condition Dew | Sous refroidissement : | 0.0 K |
| The performance data are in ARI 520-90 conditions : | Return gas : | 4.4 °C |
| Dew Condition | Subcooling : | 0.0 K |

| 50 Hz R22 | | | | | | | |
|--------------------|--------------------|--------|------------|------------|------------|-----------|----------|
| N°236LU-K | | | | | | | |
| 4 T condensation | 5 T évaporation | (°C) | -20 | -15 | -10 | -5 | 0 |
| 40 | 1 P frigorifique | (Watt) | 2686 | 4034 | 5501 | 7083 | 8773 |
| | 2 P absorbée | (W) | 1970 | 2283 | 2568 | 2826 | 3057 |
| | 3 I absorbée | (A) | 8.31 | 8.82 | 9.31 | 9.78 | 10.2 |
| 50 | 1 P frigorifique | (Watt) | 2064 | 3219 | 4484 | 5854 | 7324 |
| | 2 P absorbée | (W) | 1844 | 2259 | 2641 | 2988 | 3301 |
| | 3 I absorbée | (A) | 7.84 | 8.62 | 9.38 | 10.1 | 10.8 |
| 60 | 1 P frigorifique | (Watt) | | 2359 | 3440 | 4617 | 5883 |
| | 2 P absorbée | (W) | | 2235 | 2713 | 3151 | 3547 |
| | 3 I absorbée | (A) | | 8.45 | 9.47 | 10.4 | 11.4 |

| 60 Hz R22 | | | | | | | |
|--------------------|--------------------|--------|------------|------------|------------|-----------|----------|
| N°236LU-K | | | | | | | |
| 4 T condensation | 5 T évaporation | (°C) | -20 | -15 | -10 | -5 | 0 |
| 40 | 1 P frigorifique | (Watt) | 3204 | 4845 | 6594 | 8448 | 10401 |
| | 2 P absorbée | (W) | 2262 | 2648 | 3014 | 3361 | 3687 |
| | 3 I absorbée | (A) | 6.26 | 7.46 | 8.55 | 9.52 | 10.4 |
| 50 | 1 P frigorifique | (Watt) | 2457 | 3865 | 5375 | 6983 | 8682 |
| | 2 P absorbée | (W) | 2118 | 2621 | 3100 | 3553 | 3981 |
| | 3 I absorbée | (A) | 5.85 | 7.29 | 8.62 | 9.84 | 11.0 |
| 60 | 1 P frigorifique | (Watt) | | 2833 | 4125 | 5508 | 6975 |
| | 2 P absorbée | (W) | | 2592 | 3184 | 3746 | 4277 |
| | 3 I absorbée | (A) | | 7.14 | 8.71 | 10.2 | 11.6 |

1 = cooling capacity 2 = power input 3 = current 4 = condensing temperature 5 = evaporating temperature

Nota : Tecumseh se réserve le droit de modifier les informations contenues dans ce document sans préavis.

Note : Tecumseh reserves the right to change information contained in this document without notification.

© 2021 Tecumseh Products Company
All rights reserved